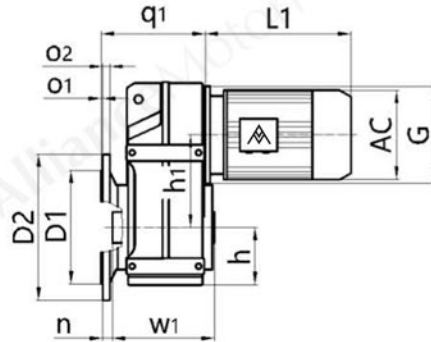
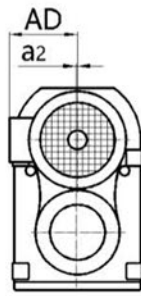
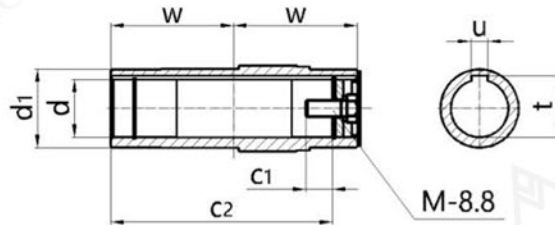
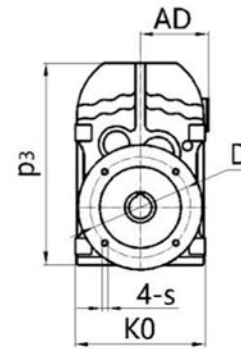


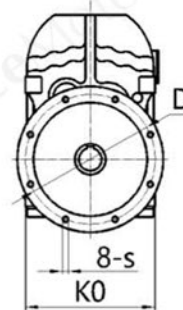
■ Mounting Dimensional Description  
AFAF39-159



AFAF39-89



AFAF99-159



Type Size	q1 K0	o1 a2	o2 d	D1 d1	D2 w	h1 c1	h n	w1 u	p3 t	s D	G c2	M	Motor Size			
													AC	AD	L1	
AFAF39	137.5 165	3.5 /	10 Φ30H7	Φ110j6 Φ45	Φ160 60	112 17	77 24	123 8	256 33.3	Φ9 Φ130	Φ120 105	M10×25	Please see appendix A-2 and A-3			
AFAF49	161.5 180	3.5 /	12 Φ35H7	Φ130j6 Φ50	Φ200 75	128.1 22	80 25	153 10	276 38.3	Φ11 Φ165	Φ120 132	M12×30				
AFAF59	177.5 200	4 /	15 Φ40H7	Φ180j6 Φ55	Φ250 83	136 29	93 23.5	170 12	321 43.3	Φ13.5 Φ215	Φ160 142	M16×40				
AFAF69	188 212	4 /	15 Φ40H7	Φ180j6 Φ55	Φ250 90	159.5 29	97 23	184 12	348 43.3	Φ13.5 Φ215	Φ160 156	M16×40				
AFAF79	234 270	4 /	16 Φ50H7	Φ230j6 Φ70	Φ300 105	200 32	122 37	213 14	430 53.8	Φ13.5 Φ265	Φ200 183	M16×45				
AFAF89	259 330	5 /	18 Φ60H7	Φ250h6 Φ85	Φ350 120	246.7 36	150 30	243 18	534 64.4	Φ17.5 Φ300	Φ250 210	M20×50				
AFAF99	320.5 400	5 /	22 Φ70H7	Φ350h6 Φ95	Φ450 150	285 34	180 41.5	303 20	630 74.9	Φ17.5 Φ400	Φ300 270	M20×50				
AFAF109	358 450	5 /	22 Φ90H7	Φ350h6 Φ118	Φ450 175	332.4 40	201 41	353 25	723 95.4	Φ17.5 Φ400	Φ350 313	M24×60				
AFAF129	429 530	5 10	25 Φ100H7	Φ450h6 Φ135	Φ550 205	382.6 38	236 51	413 28	861 106.4	Φ17.5 Φ500	Φ450 373	M24×60				
AFAF159	521 660	6 15	28 Φ120H7	Φ550h6 Φ155	Φ660 250	447 36	286 60	503 32	1021 127.4	Φ22 Φ600	Φ550 460	M24×60				

Note:the dimensions don't include the height of the breathe valve.the height of the breathe valve is 17.

Note:When equipping the user's motor or the special one, the flange is required to connected. (Please see appendix D)