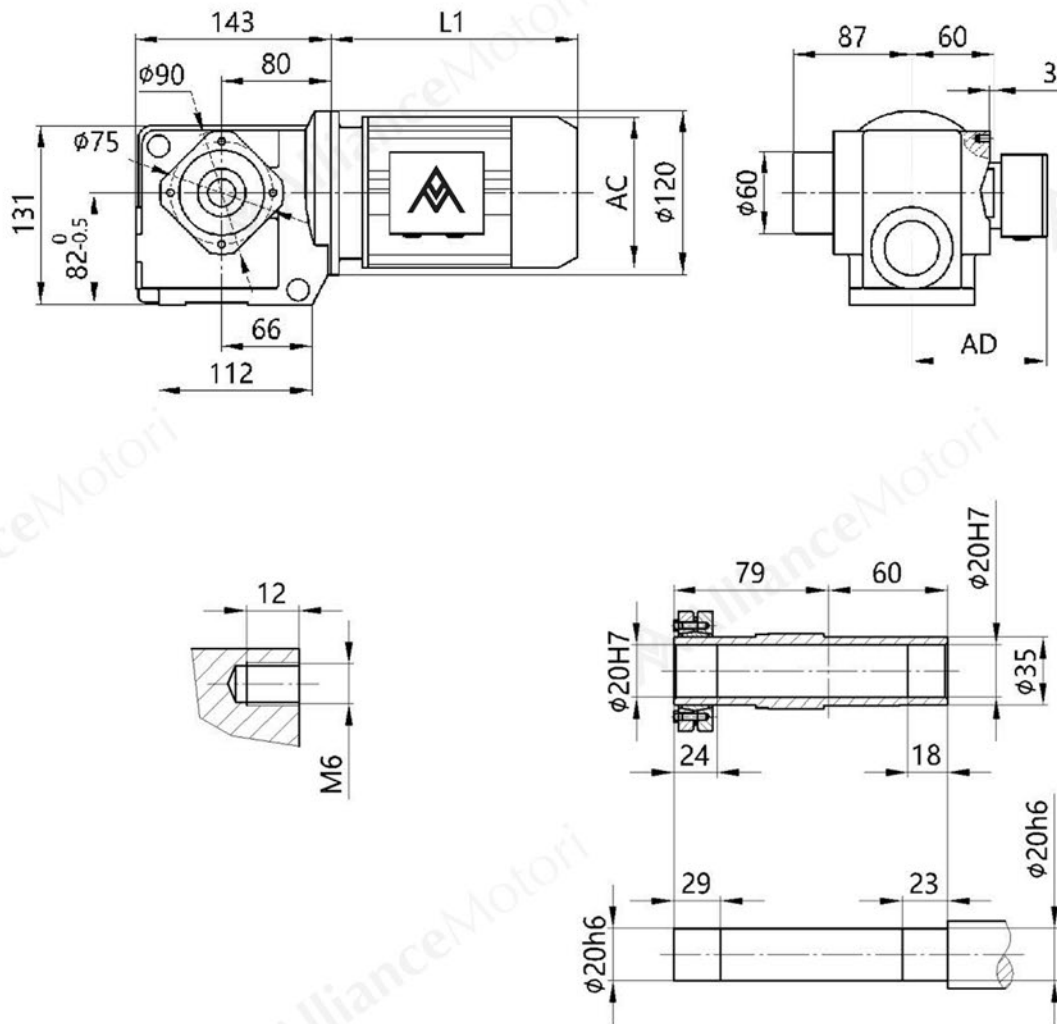
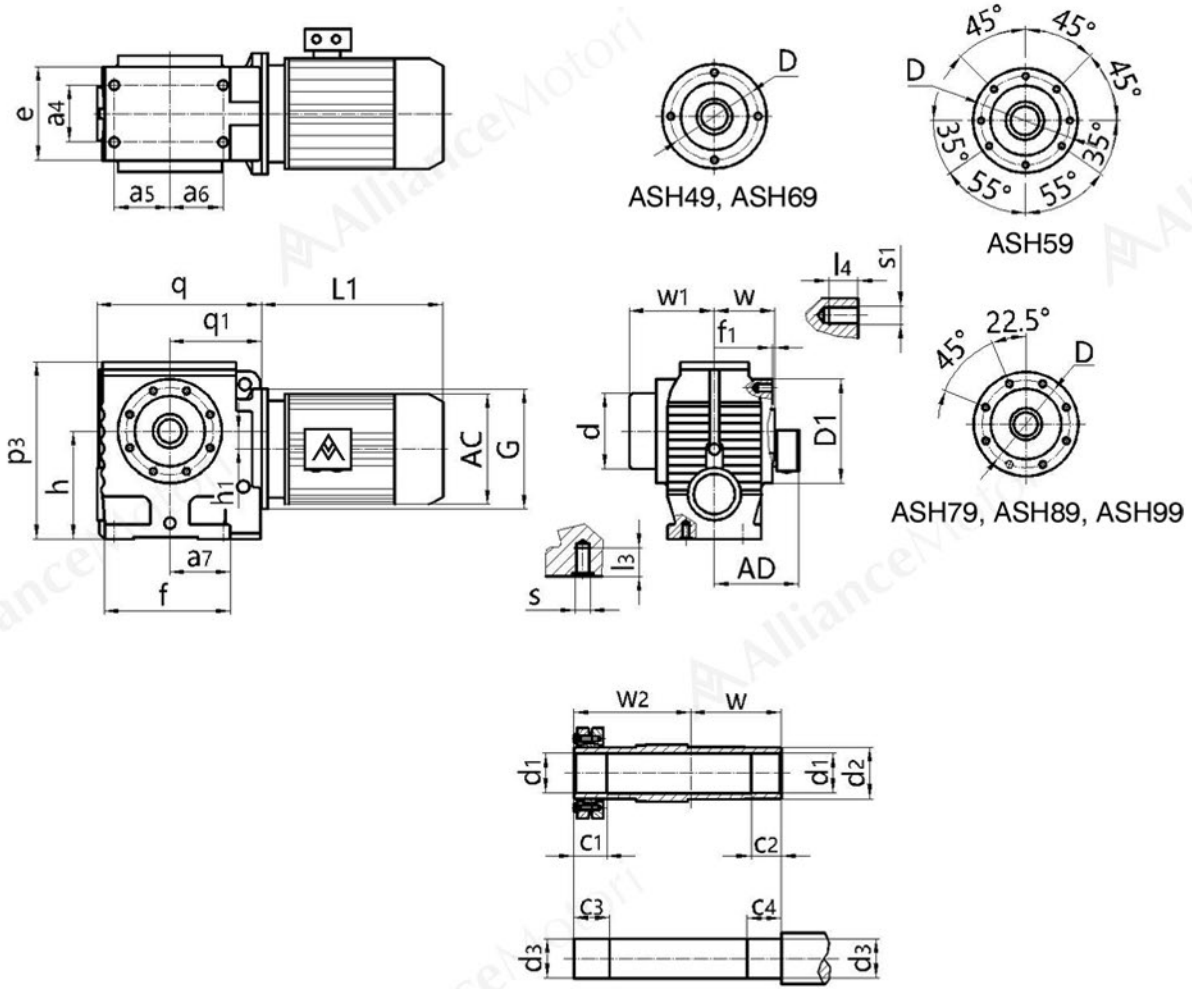


■ Mounting Dimensional Description ASH39



Note: When equipping the user's motor or the special one, the flange is required to be connected. (Please see appendix D)  
 Note: See Appendix A-2 and A-3 for dimensions of direct-connected motors

■ Mounting Dimensional Description ASH49-99



Type Size	q q1	e a4	a6 a5	p3 a7	h h1	f f1	w w1	c1 c2	c3 c4	D D1	d d1	d2 d3	s s1	l3 l4	w2 G	Motor Size				
																AC	AD	L1		
ASH49	175	94	52	181	100 <sup>-0.5</sup>	127	60	31	36	Φ115	Φ80	Φ45	M10	20	86	Please see appendix A-2 and A-3				
	96	60	35	67	8	2.5	95	20	25	Φ130	Φ30H7	Φ30h6	M8	14	Φ120					
ASH59	191	100	58.5	191	112 <sup>-0.5</sup>	146	75	32	37	Φ102	Φ88	Φ50	M10	20	102					
	107	60	58.5	73	20	3	110	20	25	Φ120	Φ35H7	Φ35h6	M8	15	Φ120					
ASH69	246	130	80.5	238	140 <sup>-0.5</sup>	182	84	38	43	Φ130	Φ102	Φ65	M12	25	112					
	135	88	71.5	95.5	22	3.5	120	20	25	Φ155	Φ40H7	Φ40h6	M12	20	Φ160					
ASH79	292	156	85	304	180 <sup>-0.5</sup>	204	105	36	41	Φ155	Φ127	Φ80	M16	32	136					
	162	102	85	104	34	4	146	30	35	Φ178	Φ50H7	Φ50h6	M12	21	Φ200					
ASH89	344	194	110	372	225 <sup>-0.5</sup>	260	125	40	45	Φ180	Φ157	Φ95	M16	32	165					
	190	118	115	125	37.5	5	176	40	45	Φ215	Φ65H7	Φ65h6	M16	28	Φ250					
ASH99	425	236	113	460	280 <sup>-1</sup>	301	145	55	60	Φ220	Φ171	Φ120	M20	37	190					
	240	160	135	140	52	5	204	50	55	Φ260	Φ75H7	Φ75h6	M16	28	Φ300					

Note:the dimensions don't include the height of the breathe valve.the height of the breathe valve is 17.

Note:When equipping the user's motor or the special one, the flange is required to connected. (Please see appendix D)